

# ♠<sup>A</sup> BLACKJACK MOBILE ANTENNAS

- ☑ The BLACKJACK100 is a Quarter-wave, Snap-in Mobile Antenna.
- ☑ Designed for mounting from the outside of the vehicle body.
- ☑ The BLACKJACK100 has a shorter whip, but both can go up to 470 MHz



WT  
A16AA0296A

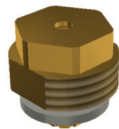


Electrical Data	BLACKJACK50	BLACKJACK100
Frequency	55 . . . 470 MHz	108 . . . 470 MHz
Nominal Gain	Unity	Unity
Bandwidth VSWR <1,5:1	2—9 MHz	2—9 MHz
VSWR	< 1,5:1	< 1,5:1
Radiation Pattern	Omni-directional	Omni-directional
Polarisation	Vertical	Vertical
Rated Power	50 W	50 W
Impedance	50 Ω	50 Ω
Termination	No cable supplied	No cable supplied
Mechanical Data		
Max. wind velocity	220 km/h	220 km/h
Whip	1,5 mm Parallel 17 – 7PH SS	1,5 mm Parallel 17 – 7PH SS
Mounting Hole Size	9.5 mm	9.5 mm
Colour	Silver and Black	Silver and Black
Dims	1450 mm	1450 mm
Shipping Dims	0.3 kg / 140 x 11 x 4 cm	0.3 kg / 140 x 11 x 4 cm

## REPLACEMENT PARTS



J44 BASE A16AA0341A  
J44P PAD A16AA0282A



K45 SNAP-IN  
A16AA0035A



MJ44 A10AA0214A

SNAP-IN BASE COMPLETE



MLW2  
A16AA0488A

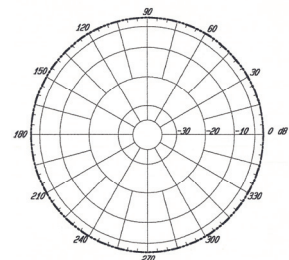


A2 FOR 50  
A10AA0127A  
A1 FOR 100  
A10AA0126A

### BLACKJACK100

A10AA0575A

1/4 WAVE



Horizontal Pattern