

100W Dummy Load, DIN Male / DIN Female

LD-100DX



Electrical

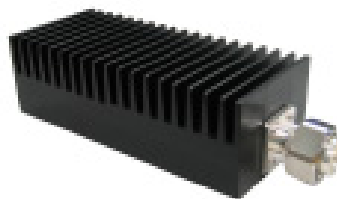
Frequency Range - [GHz]	DC ~ 3
Impedance - [Ω]	50
Average Power - [W]	100
Peak Power - [KW]	10
VSWR, Max	1.20

Mechanical & Environmental

Dimension* - [mm]	210x 80 x60
Weight - [g]	1800
Connector Type	DIN Male or DIN Female
Temperature Range - [$^{\circ}$ C]	-40 ~ +80

Order Information

Model Number	ERP Code	Remark
LD-100DM	101003-000003-00	DIN Male
LD-100DF	TBA	DIN Female



* Note: Dimension Tolerance is $\pm 2\%$, it refer to connector type N unless otherwise specified.