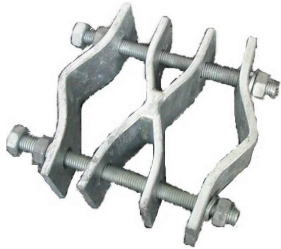




PARALLEL, UNIVERSAL & CROSS OVER CLAMPS

PART NO ACCOMMODATES CHARACTERISTICS

PARALLEL CLAMPS



PC 3	Ø34mm - Ø 76mm PIPE	MS HDG
PC 7	→ Ø34mm - Ø 89mm PIPE	MS HDG
PC10	Ø34mm - Ø127mm PIPE	MS HDG
PC12	Ø34mm - Ø165mm PIPE	MS HDG

PARALLEL

SUPPLIED WITH ALL
NECESSARY NUTS
AND WASHERS



UNIVERSAL CLAMPS

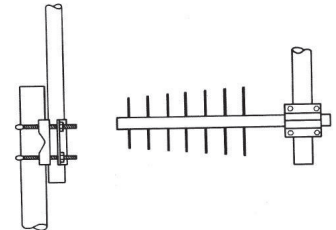


CLUNV

UC Ø25mm - Ø60mm PIPE MS HDG

PARALLEL OR
PERPENDICULAR

SUPPLIED WITH ALL
NECESSARY NUTS
AND WASHERS



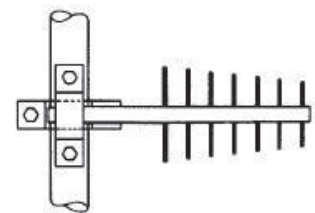
CROSS OVER CLAMPS



CO90 Ø34mm – Ø76mm PIPE MS HDG

PERPENDICULAR

SUPPLIED WITH ALL
NECESSARY NUTS
AND WASHERS



CO99 Ø34mm – Ø76mm PIPE MS HDG

PERPENDICULAR

SUPPLIED WITH ALL
NECESSARY NUTS
AND WASHERS